

# Malaria Epidemic Detection Initiative in Oromia, Ethiopia Newsletter



President's Malaria Initiative



**Highlights:**

- New collaboration with EHNRI working on Laboratory Quality control
- The result from Gunagua health center still has shown epidemic

A partnership between Addis Continental Institute of Public Health, Tulane University, the Oromia Regional Health Bureau, MEASURE Evaluation & the United States Agency for International Development

## Updates on Ethiopian Malaria Epidemic Detection Initiative Project

*By Honelgn Nahusenay*

**IRS:** Indoor Residual Spraying is one of the vector control strategies being used in the fight against malaria. Eight out of the ten sentinel sites have undergone IRS operation in August. In the operation Bendiocarb, a carbamate insecticide has been used. ACIPH provided logistic support for Bulbula Health Center during the operation.

**Laboratory quality control:** ACIPH and EHNRI are working together to increase the quality of malaria diagnosis. EHNRI started reading of blood slides collected for quality control purpose. The institute provides professional comments on the quality of staining and other issues. The results are communicated to the lab technicians at the health centers; slides with discordant results are taken back to the health centers and onsite support is given. The continuous support for lab quality provided through this approach serves to strengthen and maintain lab diagnostic quality over time.

**SMS reporting:** Since July 7, 2011, sentinel sites have submitted weekly malaria reports via SMS. This has enabled early detection of epi-

Report Name: Data Submission Report

Page:

### Data Submission Report

Week Ending : 2003-11-07

Name	Health Facility Type	Patients	Tested	Pf+	Pv+	Mixed	Negative
Asendabo	Health Center	231	122	23	5	18	76
Kersa	Health Center	157	19	1	0	0	18
Melehara	Health Center	132	44	1	4	1	38
Tulubolo	Health Center	167	41	2	10	0	29
Guangua	Health Center	388	292	96	93	5	98
Welenchiti	Health Center	203	72	2	9	1	60
Asebot	Health Center	128	28	0	0	0	28

A sample of aggregate data generated by the system

**Inside this issue:**

- Updates on Ethiopian Malaria Epidemic Detection Project 1
- Selected results from the epidemic detection (Health centers) sites 2-3
- Selected results from the epidemic detection (Health Posts) sites 3-4

demics in the sentinel sites. Onsite trainings on SMS reporting was given for HEW at their health posts or in sentinel site health centers. Currently, the number of health facilities reporting using SMS has increased to 31.

In order to make reports available, a user account enabling access to weekly malaria data was developed and shared with different stakeholders such as ORHB and PMI. Using the account, interested health professionals can see the numbers of cases, charts and maps of malaria cases. These are generated automatically and weekly by the system and serve to provide rapid information for decision making.

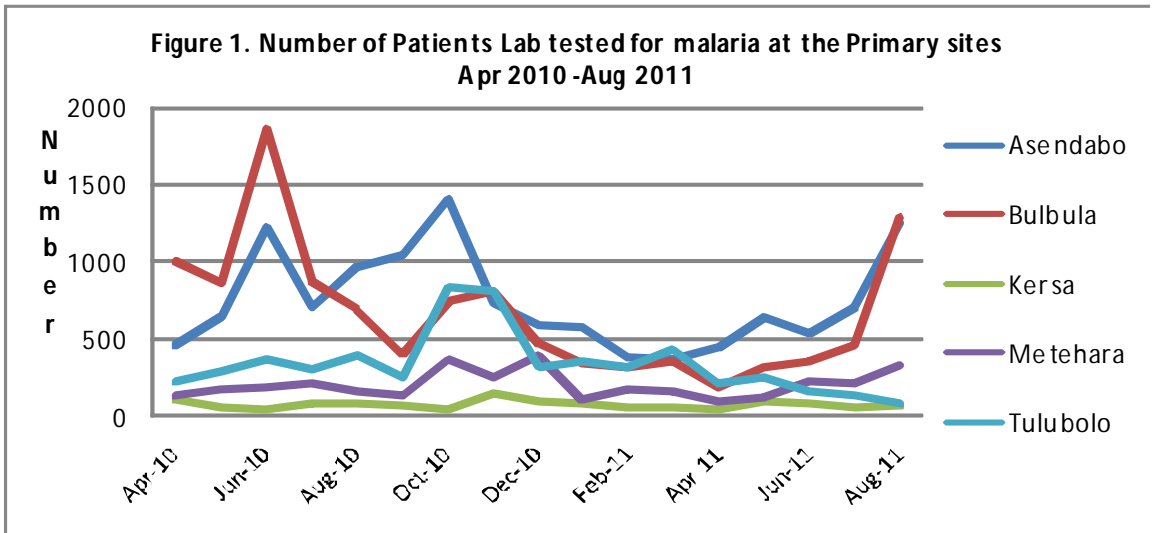


Laboratory Service at Bulbula H.C. 2011

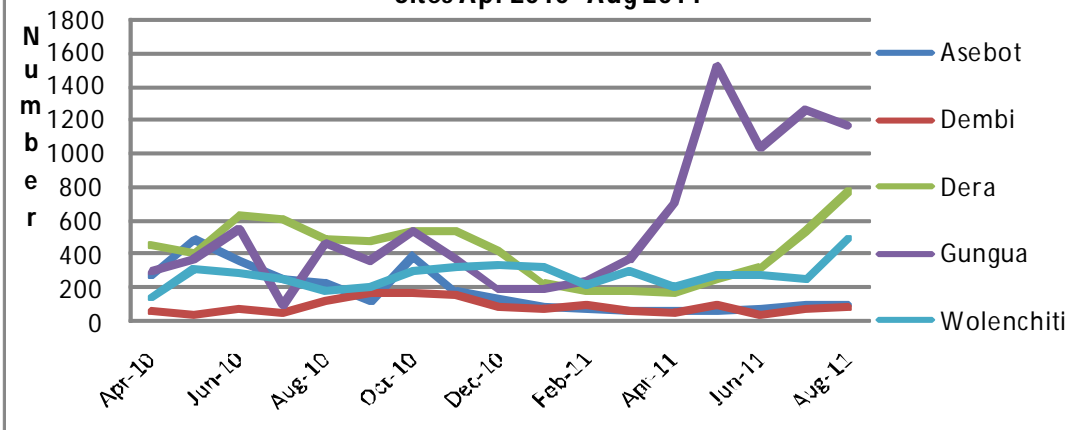
## Selected Results from the Sentinel Sites (Health Centers)

**Figure 1. Trends in number of patients laboratory tested for malaria at the primary sites, since April, 2010.**

An increase in the number of lab tested patients for malaria has been observed starting from June 2011 in Asendabo and Bulbula; while slight increase beginning in July was observed at Metehara.

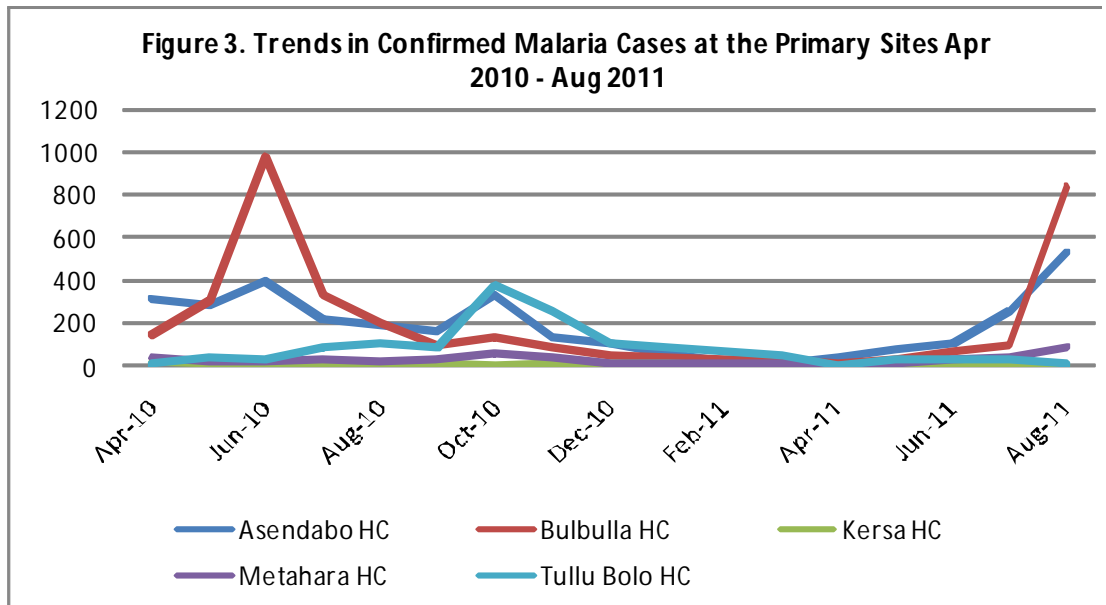


**Figure 2. Number of Patients Lab Tested for Malaria at Secondary Sites Apr 2010 -Aug 2011**

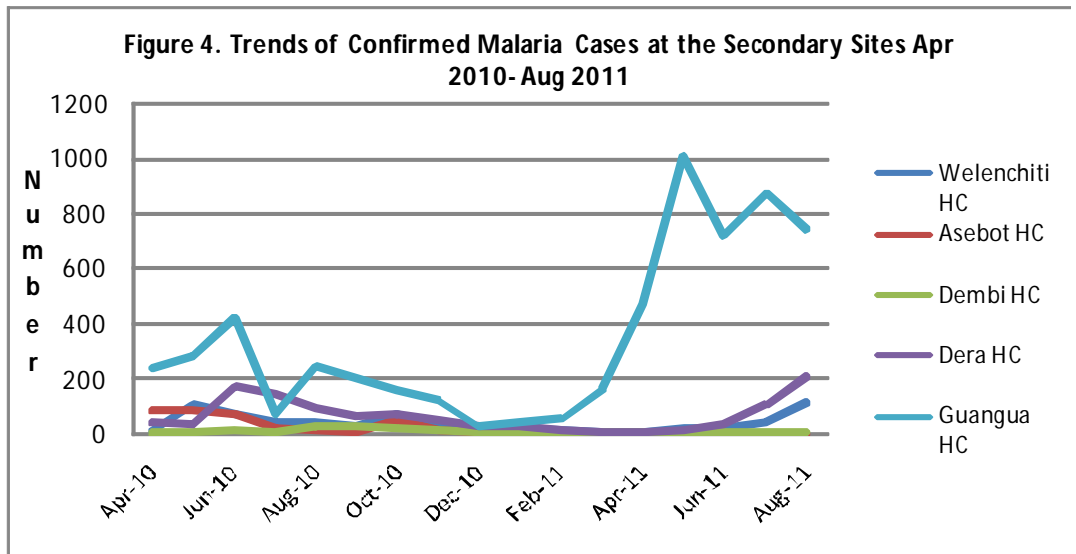


**Figure 3: Trends of confirmed malaria cases at the primary sites as of April 2010.**

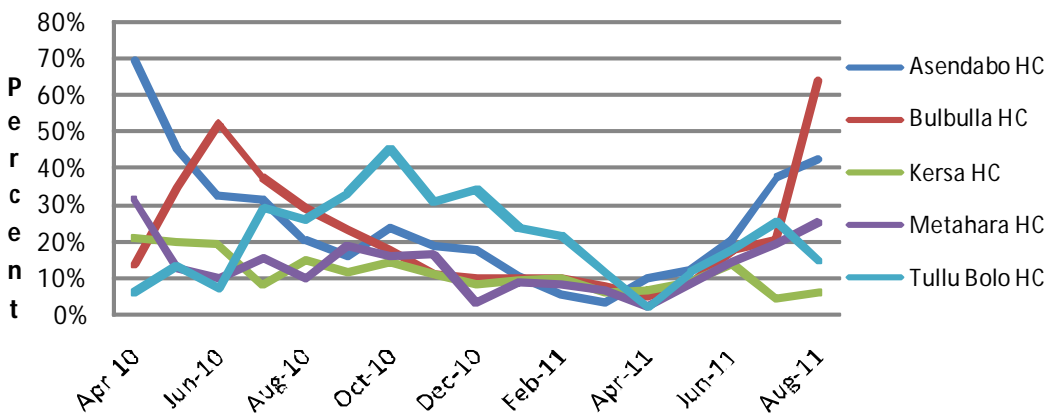
The trend in confirmed malaria at the primary sites is somewhat similar with the trend for the lab tested cases. An increased trend has been observed for Bulbula starting in July 2011. Compared with the 2010 trend for the same months, the increase in Asendabo appears to be later in the year. A case buildup is also being seen at Asendabo HC.



**Figure 4: Trends in confirmed malaria cases at the secondary sites, since April, 2010.** The trend in confirmed malaria cases shows that the malaria situation in Gunagua is still in epidemic state although a reduction has been reported around June 2011. A slight increase in the confirmed malaria cases has also been seen for Dera and Wolenchiti since July 2011.



**Figure 5. Trends in test Positivity Rate at the Primary Sites Apr2010-Aug 2011**

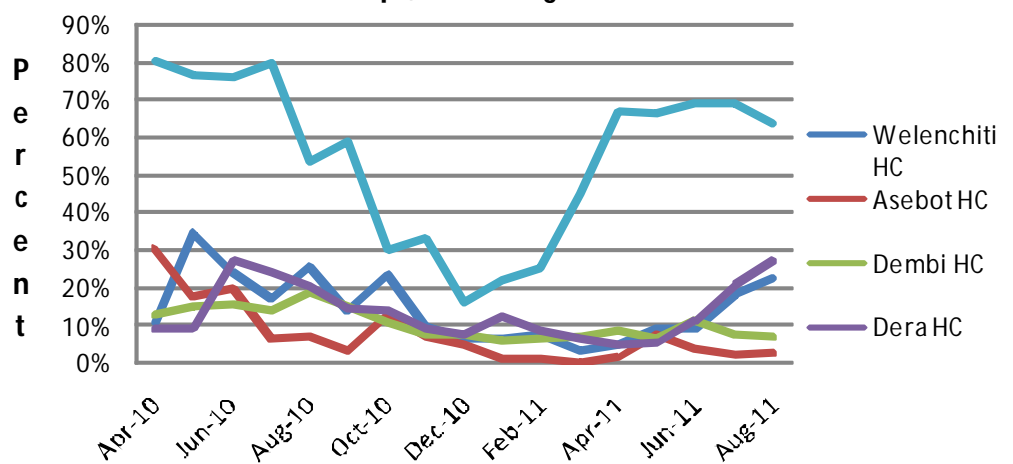


**Figure 5. Trends in overall test positivity rate at the primary sites since April, 2010.** The test positivity rate at Bulbulla HC has shown a sharp increase in July 2011 and continued to increase in August as well. This is similar to the trend of confirmed cases in the same site. Increasing TPRs are also seen at Asendabo and Metehara HCs.

**Figure 6. Trends in overall test positivity rate at the Secondary sites since April, 2010.**

The TPR also followed similar trend with the number of confirmed cases in the secondary sites. Dera and Welenchiti are showing general increases in TPR while Guangua's TPR remains high and stable indicative on the ongoing epidemic there.

**Figure 6. Trends in Test Positivity Rate at the Secondary Sites Apr, 2010 - Aug 2011**



## Selected Results from the Sentinel Sites (Health Posts)

Figure 7. Trend in confirmed cases of malaria at the health posts of three sentinel sites as of Nov 2010. The reporting period varied across sites. The trend in Bulbula and Asendabo sites starting from June 2011. This is similar to the trends in their respective Health centers.

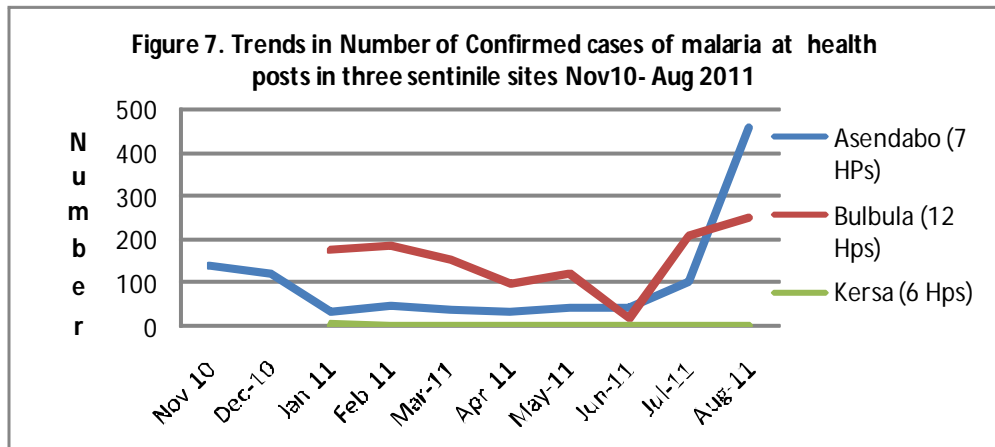


Figure 8. Trends in TPR at the health posts of three sentinel sites Nov 2010- Aug 2011

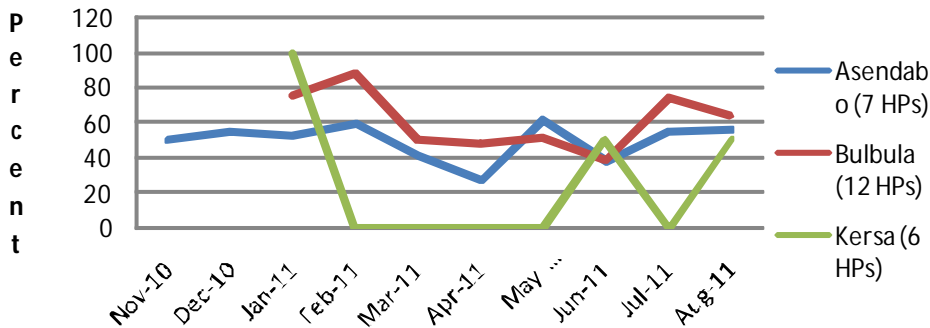


Figure 8. Trend in TPR at the health posts of the three sentinel sites as of Nov 2010. TPR at health posts have remained stable with the exception of Kersa where low cases and patient numbers lead to instability. Increases in Positive cases indicate an expanding patient loads.

**For Further Information, please contact either ACIPH or Tulane University**



President's Malaria Initiative

*Addis Continental Institute of Public Health*

Tibebu Building,  
Kirkos Sub city,  
Keble 03 House No.274,  
Gabon Street  
P.O. Box 26751/1000  
Addis Ababa, Ethiopia

Fax: +251(0)114-168250  
Tel: +251(0)116-526853  
+251(0)114-168265  
+251(0)114-168207  
E-Mail: aciph@ethionet.et

*Tulane University School of Public Health and Tropical Medicine*

Department of International Health & Development  
1440 Canal Street, Suite. 2200  
New Orleans, LA 70112  
USA

Fax: +1(504)988-3653  
Tel: +1(504)988-1440  
E-Mail: jyukich@tulane.edu



MEASURE  
Evaluation

[www.addiscontinental.edu.et](http://www.addiscontinental.edu.et)

[www.sph.tulane.edu](http://www.sph.tulane.edu)

